



RHODE ISLAND COLLEGE

ALGER HALL - CYBER SECURITY
RFQ25004830 – CONSTRUCTION OF CYBER SECURITY RANGE AT ALGER HALL
PROVIDENCE, RHODE ISLAND

ADDENDUM #1

November 13, 2024

TABLE OF CONTENTS

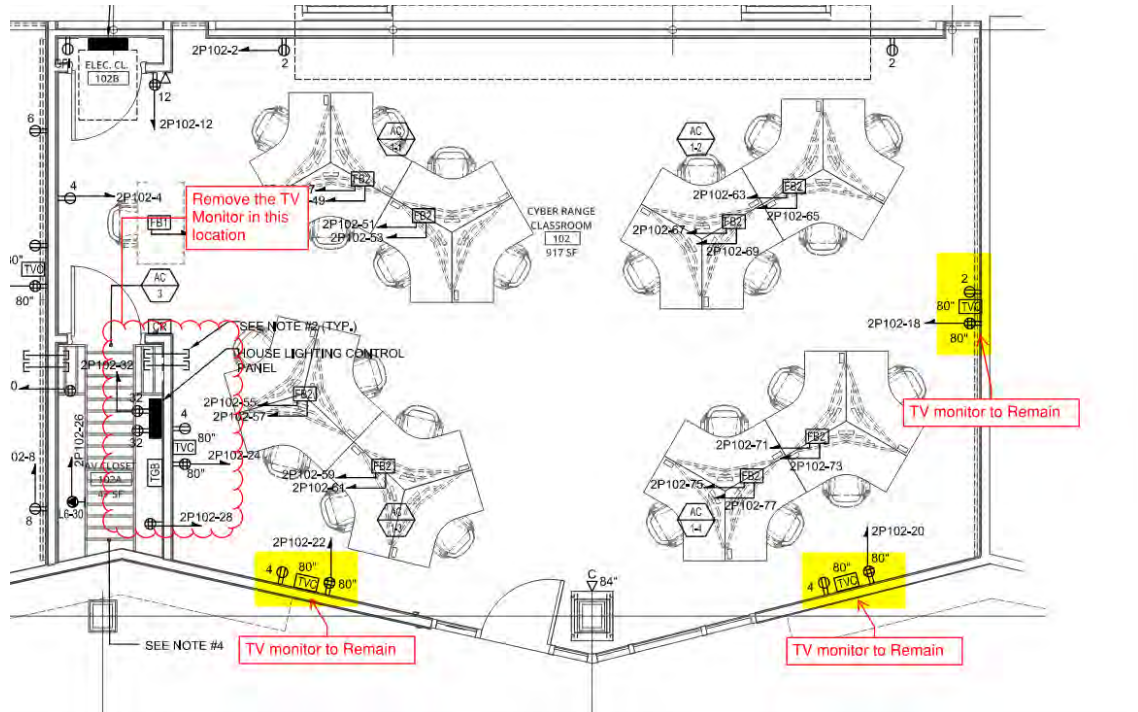
- I. Questions and Answers
- II. Pictures of the Storage Closet
- III. Pictures of the Data Closet
- IV. Updated Electrical Drawings
 - a. E0.01
 - b. E0.02
 - c. E0.03
 - d. ED1.00
 - e. E1.00

END OF TABLE OF CONTENTS

QUESTIONS AND ANSWERS FOR ALGER HALL – CYBER SECURITY

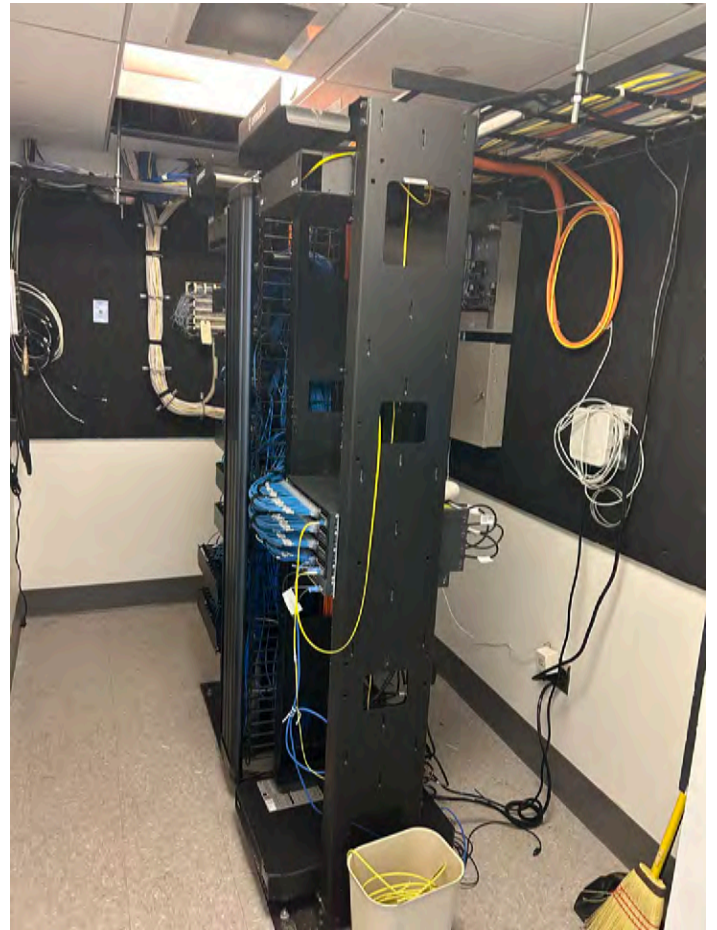
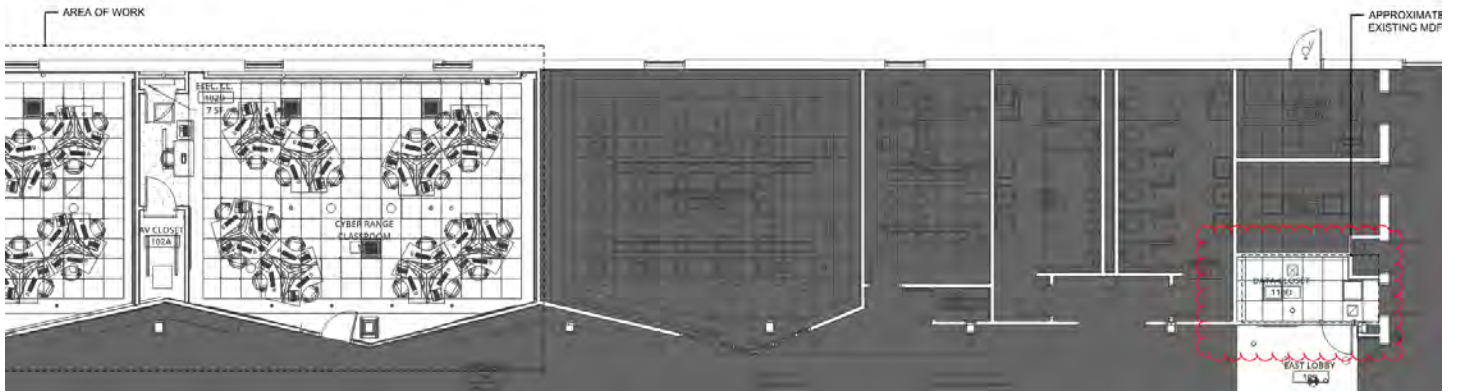
I. Questions (Answers)

1. Will floor protection in the hallway be needed?
 - i. Yes, please provide floor protection in the hallway. This hallway must remain accessible to students. Please ensure the floor protection is secure for consistent foot traffic.
2. Will the existing furniture in the rooms be removed prior to construction?
 - i. Yes, all furniture will be removed from the rooms by RIC prior to the start of construction.
3. Please confirm the locations of the TV monitors in the Cyber Range.
 - i. There will be 3 TV Monitors in the Cyber Range in the following locations:



4. On Drawing A6.01 under Keynotes 101410.03 calls for cast metal characters see detail B4/A10.50. When you refer to that specific drawing there is not a detail B4, there is B3, B5, B6
 - i. The correct detail can be found at C6/A10.50 "TYP. SIGNAGE LETTERING DTL"
 - ii. Also refer to specifications 10 14 00, paragraph 2.4 "CAST METAL LETTERS"

III. Pictures of Data Closet 110 D



IV. Updated Electrical Drawings

1. Please refer to the attached drawings. The changes are bubbled as "Addendum #1"
 - i. E0.01
 - ii. E0.02
 - iii. E0.03
 - iv. ED1.00
 - v. E1.00

R H O D E
I S L A N D
COLLEGE

END OF DOCUMENT

LEGEND NOTES

MOUNTING HEIGHTS SHALL BE AS INDICATED UNLESS INDICATED OTHERWISE ON ELECTRICAL DRAWINGS OR ARCHITECTURAL ELEVATIONS

ALL SYMBOLS MAY NOT BE SHOWN ON PLANS

HOMERUNS

HOMERUN TO PANELBOARD. "P" DENOTES PANEL. "1" DENOTES CIRCUIT NUMBER. 20 AMP 1 POLE CIRCUIT BREAKER UNLESS INDICATED OTHERWISE. WIRING SHALL BE 2#12-1#12G IN 3/4" AT MINIMUM.

MULTI-POLE HOMERUN TO PANELBOARD. "P" DENOTES PANEL. "2,4,6" DENOTES CIRCUIT NUMBERS. "30/3" DENOTES 30 AMP 3 POLE CIRCUIT BREAKER. WIRING SHALL BE AS INDICATED.

RACEWAYS AND WIRING

EMERGENCY ONLY WIRING

CABLE TRAY - REFER TO SPECIFICATIONS FOR REQUIREMENTS

FLEXIBLE CONNECTION TO EQUIPMENT. RACEWAY AND CONDUCTOR RATING TO MATCH ASSOCIATED BRANCH CIRCUIT OR FEEDER.

BRANCH CIRCUIT OR FEEDER CONCEALED IN FINISHED AREA.

BRANCH CIRCUIT OR FEEDER CONCEALED UNDER FINISHED FLOOR.

BRANCH CIRCUIT OR FEEDER TURNING UP TOWARDS OBSERVER.

BRANCH CIRCUIT OR FEEDER TURNING DOWN AWAY FROM OBSERVER.

CONDUIT STUBBED ABOVE CEILING.

LIGHTING FIXTURES

SURFACE OR RECESSED MOUNTED LIGHTING FIXTURE ON NORMAL CIRCUIT. "A" DENOTES FIXTURE TYPE. "2" DENOTES CIRCUIT NUMBER. "a" DENOTES SWITCH CONTROL.

LIGHTING FIXTURE WIRED TO CONSTANT-ON OR NORMAL EMERGENCY CIRCUIT

SURFACE OR RECESSED MOUNTED LINEAR LIGHTING FIXTURE

PENDANT MOUNTED LINEAR LIGHTING FIXTURE

ROUND RECESSED LIGHTING FIXTURE

DECORATIVE PENDANT LIGHTING FIXTURE

WALL MOUNTED LIGHTING FIXTURE

WALL WASH OR DIRECTIONAL LIGHTING FIXTURE

CEILING MOUNTED ILLUMINATED EXIT SIGN. SINGLE OR DOUBLE FACE. WITH OR WITHOUT ARROWS AS INDICATED ON DRAWINGS

WALL MOUNTED ILLUMINATED EXIT SIGN - SHADING INDICATES FACE PLATE(S)

SELF-CONTAINED EMERGENCY LIGHTING UNIT

REMOTE EMERGENCY LIGHTING HEADS - SINGLE OR DOUBLE AS SHOWN.

POLE MOUNTED SITE LIGHTING FIXTURE

TRACK LIGHTING AND HEADS. LENGTH OF TRACK AND QUANTITY OF HEADS AS SHOWN ON FLOOR PLANS

INVERTER

LIGHTING CONTROL DEVICES

SINGLE POLE TOGGLE SWITCH. SUBSCRIPT INDICATES LIGHTING FIXTURE CONTROL.

THREE WAY TOGGLE SWITCH. SUBSCRIPT INDICATES LIGHTING FIXTURE CONTROL.

FOUR WAY TOGGLE SWITCH. SUBSCRIPT INDICATES LIGHTING FIXTURE CONTROL.

KEY OPERATED SWITCH. SUBSCRIPT INDICATES LIGHTING FIXTURE CONTROL.

SINGLE POLE TOGGLE SWITCH WITH RED PILOT LIGHT.

DIMMER SWITCH. SUBSCRIPT INDICATES LIGHTING FIXTURE CONTROL.

CEILING MOUNTED OCCUPANCY SENSOR.

CEILING MOUNTED VACANCY SENSOR.

WALL MOUNTED VACANCY SENSOR.

WALL MOUNTED VACANCY SENSOR.

PHOTOCELL.

TIME CLOCK.

RECEPTACLES AND POWER DEVICES

DUPLEX RECEPTACLE. "2" DENOTES CIRCUIT NUMBER. "48" DENOTES MOUNTING HEIGHT (18" UNLESS OTHERWISE NOTED). "IG" DENOTES ISOLATED GROUND TYPE DEVICE. "WP" DENOTES WEATHER PROOF COVER.

DUPLEX RECEPTACLE MOUNTED 6" ABOVE COUNTER TOP OR AS INDICATED ON ARCHITECTURAL PLANS

DOUBLE DUPLEX RECEPTACLE

DOUBLE DUPLEX RECEPTACLE MOUNTED 6" ABOVE COUNTER TOP OR AS INDICATED ON THE ARCHITECTURAL PLANS

DUPLEX RECEPTACLE ONE HALF SWITCH CONTROLLED

DUPLEX RECEPTACLE FOR ELECTRIC WATER COOLER. PROVIDE DEDICATED 20A/1# GFCI CIRCUIT BREAKER UNLESS NOTED OTHERWISE.

DUPLEX RECEPTACLE FLOOR MOUNTED

SPECIAL PURPOSE RECEPTACLE. "16-30" DENOTES TYPE. SEE POWER PLANS FOR EXACT TYPES USED

SINGLE RECEPTACLE

DUPLEX GROUND FAULT CIRCUIT INTERRUPTER RECEPTACLE

CEILING MOUNTED DUPLEX RECEPTACLE

PROVIDE 4 GANG POWER/DATA FLUSH MOUNTED RECESSED FLOOR BOX WIREMOLD RFB4S-OG OR EQUAL WITH ALL REQUIRED ACCESSORIES. PROVIDE (2) DUPLEX RECEPTACLES AND (2) TEL/DATA COVER PLATES. PROVIDE (1) 1" C FOR POWER AND (1) 2" C FOR DATA/AV WIRING. POWER AND DATA COMPARTMENTS SHALL HAVE PHYSICAL SEPARATION.

PROVIDE 10 GANG POWER/DATA FLUSH MOUNTED RECESSED FLOOR BOX WIREMOLD RFB10S-OG OR EQUAL WITH ALL REQUIRED ACCESSORIES. PROVIDE (6) DUPLEX RECEPTACLES AND (4) TEL/DATA COVER PLATES. PROVIDE (2) 1" C FOR POWER AND (1) 2" C FOR DATA/AV WIRING. POWER AND DATA COMPARTMENTS SHALL HAVE PHYSICAL SEPARATION.

POWER DISTRIBUTION SYSTEM

DISTRIBUTION PANEL

PANELBOARD, SURFACE MOUNTED

PANELBOARD, FLUSH MOUNTED

JUNCTION BOX, SIZED PER NEC

MOTOR. "2" DENOTES HORSEPOWER

MANUAL MOTOR STARTER WITH THERMAL OVERLOAD. "P" DENOTES PILOT LIGHT

MAGNETIC MOTOR STARTER WITH ENCLOSURE. MINIMUM SIZE NEMA 1

NON-FUSED DISCONNECT SWITCH. "30/3" DENOTES 30 AMP/3 POLE SWITCH

FUSED DISCONNECT SWITCH. "30/20/3" DENOTES 30 AMP/3 POLE SWITCH, 20 AMP FUSES

COMBINATION MAGNETIC STARTER AND FUSED DISCONNECT SWITCH. SIZE OF STARTER, SWITCH AND FUSE AS REQUIRED

DRY-TYPE DISTRIBUTION TRANSFORMER. "15" DENOTES SIZE.

AUTOMATIC TRANSFER SWITCH

"K" FACTOR DRY TYPE TRANSFORMER. "2" DENOTES SIZE

TRANSIENT VOLTAGE SURGE SUPPRESSION

METER SOCKET AND UTILITY METER BY UTILITY COMPANY

ENCLOSED CIRCUIT BREAKER

ELECTRICAL GROUNDING BUSBAR

ELECTRICAL MAIN GROUNDING BUSBAR

GROUND

TELECOMMUNICATIONS

E.C. SHALL PROVIDE A DOUBLE GANG BACK BOX WITH SINGLE GANG REDUCER, 1" CONDUIT AND PULLSTRING STUBBED OUT ABOVE ACCESSIBLE CEILING AT ALL LOCATIONS. ALL DEVICES SHALL BE MOUNTED AT 18" AFF UNLESS OTHERWISE NOTED.

TELEPHONE OUTLET

TELEPHONE OUTLET MOUNTED 54" A.F.F.

TELEPHONE OUTLET FLOOR MOUNTED

COMPUTER SYSTEM OUTLET

COMPUTER SYSTEM OUTLET, FLOOR MOUNTED

COMBINATION TELEPHONE/DATA OUTLET

AV CAMERA SYSTEM OUTLET - MOUNT AT 84" A.F.F. U.N.O.

WIRELESS ACCESS POINT

TELECOMMUNICATIONS GROUNDING BUSBAR

ABBREVIATIONS

| | | | |
|-------|---|--------|------------------------------------|
| 3R | NEMA 3R RATING | JB | JUNCTION BOX |
| 4X | NEMA 4X RATING | KCMIL | ONE THOUSAND CIRCULAR MILS |
| A/AMP | AMPERES | KVA | KILOVOLT-AMPERES |
| AC | ALTERNATING CURRENT | KW | KILOWATTS |
| ADA | AMERICAN WITH DISABILITIES ACT | MCA | MINIMUM CIRCUIT AMPS |
| AF | AMPERE FRAME | MCB | MAIN CIRCUIT BREAKER |
| AFB | ABOVE FINISHED FLOOR | MCC | MOTOR CONTROL CENTER |
| AFG | ABOVE FINISHED GRADE | MD | MOTORIZED DAMPER |
| AHJ | AUTHORITY HAVING JURISDICTION | M.L.O. | MAIN LUGS ONLY |
| AIC | AMPERE INTERRUPTING CAPACITY | MOOP | MAXIMUM OVER-CURRENT PROTECTION |
| AL | ALUMINUM | MH | MANHOLE |
| AT | AMPERE TRIP | N | NEUTRAL |
| ARCH | ARCHITECT | NC | NORMALLY CLOSED |
| ATS | AUTOMATIC TRANSFER SWITCH | NEC | NATIONAL ELECTRICAL CODE |
| AWG | AMERICAN WIRE GAUGE | NL | NIGHT LIGHT |
| BFG | BELOW FINISHED FLOOR | NIC | NOT IN CONTRACT |
| C | CONDUIT | N | NORMALLY OPEN |
| C.T. | CURRENT TRANSFORMER | NTS | NOT TO SCALE |
| CAT | CATALOG | Ø | Ø PHASE |
| CATV | CABLE TELEVISION | P | POLE |
| CB | CIRCUIT BREAKER | PC | PLUMBING CONTRACTOR |
| CCTV | CLOSED CIRCUIT TV SYSTEM | P.T. | POTENTIAL TRANSFORMER |
| CD | CANDELA | PVC | POLYVINYL CHLORIDE |
| CKT | CIRCUIT | SN | SOLID NEUTRAL |
| CU | COPPER | SM | SURFACE MOUNT |
| dB | DECIBEL | W | SHUNT TRIP |
| DC | DIRECT CURRENT | T/D | TEL/DATA |
| DWG | DRAWING | TEL | TELEPHONE |
| E | WIRED ON EMERGENCY CIRCUIT | TVSS | TRANSIENT VOLTAGE SURGE SUPPRESSOR |
| EC | ELECTRICAL CONTRACTOR | TYP | TYPICAL |
| EM | EMERGENCY | UG | UNDERGROUND |
| F | FAHRENHEIT | UL | UNDERWRITERS LABORATORIES |
| FBA | FINISHED BY ARCHITECT | UNO | UNLESS NOTED OTHERWISE |
| FLA | FULL LOAD AMPERES | UPS | SUPPLY |
| G | GROUND | V | VOLTS |
| GC | GENERAL CONTRACTOR | VA | VOLT-AMPERE |
| GFCI | GROUND FAULT CIRCUIT INTERRUPTER | VFD | VARIABLE FREQUENCY DRIVE |
| HH | HAND HOLE | VIF | VERIFY IN FIELD |
| HP | HORSE POWER | W | WATT |
| HVAC | HEATING, VENTILATION, AIR CONDITIONING CONTRACTOR | WP | WEATHERPROOF |
| HZ | HERTZ | XFMR | TRANSFORMER |
| IG | ISOLATED GROUND | | |

MISCELLANEOUS

CONTROL PANEL

PULL BOX - SIZED PER NEC FOR CONDUITS ENTERING AND LEAVING AS REQUIRED

CABLE TELEVISION OUTLET. WALL MOUNTED. E.C. SHALL PROVIDE 3/4" EMPTY CONDUIT WITH PULL STRING TO NEAREST ACCESSIBLE CEILING. PROVIDE FACEPLATE WITH TYPE "F" CONNECTOR AT BOX.

PUSHBUTTON AND PLATE

120 VOLT RECESSED CLOCK HANGER OUTLET

CENTRAL SYSTEM CLOCK WIRED TO CORRECTIVE CLOCK WIRING SYSTEM 1/2" DIAMETER UNLESS OTHERWISE NOTED "SP" DENOTES SHATTER GUARD

CLOCK/SPEAKER COMBINATION

MASTER CLOCK PANEL

INTERCOM

MASTER INTERCOM PANEL

DOOR BELL/BUZZER. LOW VOLTAGE

LOW VOLTAGE TRANSFORMER

MUSHROOM TYPE PUSHBUTTON STATION FOR ACTIVATION OF SHUNT-TRIP DEVICE ON INDICATED CIRCUIT BREAKER

COAXIAL CABLE OUTLET

PARTIAL PLAN/DETAIL CALL OUT TAG. TOP NUMBER INDICATES PLAN/DETAIL AND BOTTOM NUMBER INDICATES SHEET CONTAINING PLAN/DETAIL.

DEMOLITION AND REMOVAL WORK

- REMOVE ALL ELECTRICAL EQUIPMENT, WIRING, AND OTHER ELECTRICAL WORK AS REQUIRED. DISCONNECT LOAD AND LINE END OF CONDUCTORS FEEDING DEVICES WHICH ARE TO BE REMOVED OR ABANDONED. REMOVE CONDUCTORS NO LONGER IN USE. CUT BACK TO FLOOR, WALL, OR CEILING AND PLUG BOTH ENDS OF CONCEALED CONDUITS MADE OBSOLETE BY THIS ALTERATION. REMOVE EXPOSED OR ABANDONED CIRCUITS AND OUTLETS. REMOVE MATERIAL AND EQUIPMENT AND DISPOSE OF AS DIRECTED.
- WHEREVER IT IS REQUIRED TO DISCONNECT OR REMOVE ANY PART OF AN EXISTING CIRCUIT, IMMEDIATELY RECONNECT THAT CIRCUIT OR REESTABLISH SERVICE IN THE REMAINING PORTION OF THE CIRCUIT. THE WORK SHALL ALSO INCLUDE THE REMOVAL OF MATERIALS AS DIRECTED. PRIOR TO REMOVING EQUIPMENT AND MATERIAL FROM PROJECT SITE, THE BUILDING MANAGER OR OWNER WILL INSPECT AND ADVISE WHICH ITEMS WILL BE STORED.
- WHERE EXISTING RECEPTACLES AND/OR SWITCHES ARE LOCATED IN COLUMNS AND/OR EXTERIOR WALLS, AND ARE NOT TO BE REUSED, REMOVE RECEPTACLE AND CAP OUTLET BOX. RECEPTACLES SHOWN ON PARTITIONS TO BE REMOVED SHALL HAVE ALL WIRING AND CONDUIT REMOVED AS WELL.
- WHERE PRESENT WORK IS DAMAGED IN THE EXECUTION OF THIS CONTRACT, OR WHERE OPENINGS ARE LEFT DUE TO THE REMOVAL OF CONDUITS, EQUIPMENT, OR APPARATUS, THE SAME SHALL BE REPAIRED OR CLOSED UP TO CORRESPOND IN MATERIAL, QUALITY, SHAPE, AND FINISH WITH THAT OR SIMILAR AND ADJOINING WORK, UNLESS OTHERWISE CALLED FOR.
- SHOULD ANY DAMAGE DUE TO THE EXECUTION OF THIS CONTRACT OCCUR TO THE FURNITURE, FIXTURES, OR ANY OTHER EQUIPMENT OR APPARATUS, SUCH DAMAGES SHALL BE PROPERLY REPAIRED WITH THE SUPPLY OF NEW ARTICLES AND MADE GOOD WITHOUT EXTRA CHARGE.
- WHERE REMOVAL OF EXISTING ELECTRICAL EQUIPMENT WILL RESULT IN OUTAGES IN AREA NOT TO BE DEMOLISHED, THIS CONTRACTOR SHALL COORDINATE IN ADVANCE AND OBTAIN THE APPROVAL OF THE BUILDING MANAGER OR OWNER.

LIGHTING FIXTURE NOTES

- PROVIDE ACCESSORIES AND MOUNTING HARDWARE FOR ALL FIXTURES.
- COLORS SHALL BE AS SELECTED BY ARCHITECT.
- COORDINATE EXACT LOCATIONS OF ALL FIXTURES WITH ARCHITECT'S REFLECTED CEILING PLAN ELEVATIONS, SECTIONS, AND THE WORK OF OTHER TRADES PRIOR TO ROUGH-IN.
- E.C. SHALL ENSURE THAT ALL PROPOSED SWITCHES AND DIMMER SWITCHES ARE COMPATIBLE WITH THE LIGHT FIXTURE(S) INDICATED TO BE CONTROLLED. INSTALL ALL SWITCHES AND DIMMER SWITCHES PER MANUFACTURER'S RECOMMENDATIONS AND REQUIREMENTS.
- ALL SELF CONTAINED EMERGENCY LIGHTING UNITS AND EXIT LIGHTING IN THE BUILDING SHALL BE CONNECTED TO THE NEAREST UN-SWITCHED LIGHTING CIRCUIT SERVING THE AREA WITH 2#12 & 1#12G, 3/4" CONDUIT UNLESS OTHERWISE NOTED.
- LOCATIONS OF ALL SWITCHES SHALL COMPLY WITH ADA CRITERIA.
- WHERE SWITCH CONTROLS ("a", "b", ETC.) ARE INDICATED, WIRE THE SWITCHES TO THE RESPECTIVE LIGHT FIXTURE. IF A FIXTURE HAS TWO OR MORE SWITCH DESIGNATIONS, WIRE FIXTURE SO THAT IT WILL BE CONTROLLED BY THE SWITCHES INDICATED.
- WIRE EXIT SIGNS TO LIGHTING CIRCUIT SERVING THE AREA AHEAD OF ALL CONTROLS.
- WIRE NIGHT LIGHTING FIXTURES FOR 24/7 OPERATION VIA UN-SWITCHED CIRCUIT AS INDICATED.
- METAL ROOF DECKS SHALL NOT BE TAPPED FOR SUPPORT OF ANY LIGHTING FIXTURES OR ELECTRICAL EQUIPMENT. PROVIDE UNISTRUT OR OTHER SUPPLEMENTAL SUPPORT FITTINGS TO BE ATTACHED TO BUILDINGS STRUCTURAL FRAMING AS REQUIRED TO SUPPORT ALL LIGHTING FIXTURES AND ELECTRICAL EQUIPMENT.

DEMOLITION LEGEND

"ETR" DENOTES EXISTING ELECTRICAL DEVICE WHICH IS TO REMAIN.

"ETD" DENOTES EXISTING ELECTRICAL DEVICE WHICH IS TO BE DEMOLISHED. PULL BACK WIRING AND CONDUIT BACK TO NEXT ACTIVE OUTLET OR POWER SOURCE.

"ETRL" DENOTES EXISTING ELECTRICAL DEVICE TO BE DISCONNECTED AND RELOCATED. EXISTING CIRCUIT SHALL BE EXTENDED AS REQUIRED TO NEW LOCATION OF EXISTING ELECTRICAL DEVICE.

"RL" DENOTES NEW LOCATION OF RELOCATED EXISTING ELECTRICAL DEVICE.

"ETRP" DENOTES EXISTING DEVICE TO BE REMOVED AND REPLACED. EXISTING CIRCUIT/WIRING AND BACK BOX SHALL REMAIN. NEW DEVICE SHALL BE LOCATED IN PLACE.

"RP" DENOTES REPLACED DEVICE.

BRANCH CIRCUIT WIRING NOTES

- WIRING IS SHOWN ON DRAWINGS ONLY FOR SPECIFIC ROUTES OR SPECIAL CONDITIONS.
- WIRING AND CONDUIT SHALL BE REQUIRED BETWEEN ALL OUTLETS INDICATED WITH CIRCUIT NUMBERS AND PANEL DESIGNATIONS.
- ALL SWITCH CONTROLS SHALL BE PROVIDED WITH WIRING AND CONDUIT AS REQUIRED.
- ALTHOUGH ALL BRANCH CIRCUIT WIRING AND CONDUIT IS NOT SHOWN, IT IS THE INTENT OF THESE DOCUMENTS THAT A COMPLETE BRANCH CIRCUIT WIRING SYSTEM BE INSTALLED.
- A GREEN GROUNDING CONDUCTOR SHALL BE RUN WITH ALL CIRCUITS. VERIFY CONDUIT SIZE TO ENSURE IT CAN ACCOMMODATE ALL PHASE, NEUTRAL AND GROUND CONDUCTORS.
- PROVIDE A NEUTRAL CONDUCTOR TO ALL NEW LIGHTING SWITCH BOXES PER NEC ARTICLE 404.2.
- IN ALL NON-DWELLING TYPE OCCUPANCIES, ALL 125-VOLT THROUGH 250-VOLT RECEPTACLES SUPPLIED BY SINGLE-PHASE BRANCH CIRCUITS RATED 150 VOLTS OR LESS TO GROUND, 50 AMPERES OR LESS, AND ALL RECEPTACLES SUPPLIED BY THREE-PHASE BRANCH CIRCUITS RATED 150 VOLTS OR LESS TO GROUND, 100 AMPERES OR LESS, SHALL HAVE GROUND-FAULT CIRCUIT-INTERRUPTER PROTECTION FOR PERSONNEL PER NEC ARTICLE 210.8(B)(2).
- PROVIDE TAMPER RESISTANT RECEPTACLES IN ALL AREAS REQUIRED BY NEC ARTICLE 406.12 (DWELLING UNITS), 406.13 (GUEST ROOMS) AND 406.14 (CHILDCARE FACILITIES).
- ALL 15A OR 20A, 120V BRANCH CIRCUITS IN DWELLING UNITS SUPPLYING OUTLETS (INCLUDING SMOKE ALARMS) IN FAMILY ROOMS, DINING ROOMS, LIVING ROOMS, PARLORS, LIBRARIES, DEN, BEDROOMS, SUNROOMS, RECREATION ROOMS, CLOSETS, HALLWAYS, OR SIMILAR ROOMS OR AREAS MUST BE PROTECTED BY A LISTED AFCI DEVICE OF THE COMBINATION TYPE PER NEC ARTICLE 210.12(A).
- ALL 15A AND 20A, 125V SINGLE PHASE RECEPTACLES IN DWELLING UNITS SHALL BE GFCI PROTECTED PER NEC ARTICLE 210.8(A).
- ALL 120-VOLT, SINGLE-PHASE, 15 AND 20 AMP BRANCH CIRCUITS SUPPLYING OUTLETS OR DEVICES INSTALLED IN DWELLING UNIT KITCHENS, FAMILY ROOMS, DINING ROOMS, LIVING ROOMS, PARLORS, LIBRARIES, DEN, BEDROOMS, SUNROOMS, RECREATION ROOMS, CLOSETS, HALLWAYS, LAUNDRY AREAS, OR SIMILAR ROOMS OR AREAS SHALL BE ARC-FAULT PROTECTED PER NEC ARTICLE 210.12.
- ALL ARC FAULT CIRCUITS IN ALL LIVING UNITS SHALL BE PROVIDED WITH A SEPARATE NEUTRAL PER CIRCUIT.
- WHERE EXISTING SWITCHES AND RECEPTACLES ARE INDICATED TO REMAIN, THIS CONTRACTOR SHALL REPLACE SAID DEVICE(S) AND DEVICE PLATE(S) WITH NEW TO MATCH THE NEW CONSTRUCTION. WHERE THEY ARE INDICATED AS RELOCATED, EXTEND BRANCH CIRCUIT WIRING TO NEW LOCATION AND PROVIDE NEW DEVICE AND DEVICE PLATE TO MATCH NEW CONSTRUCTION.

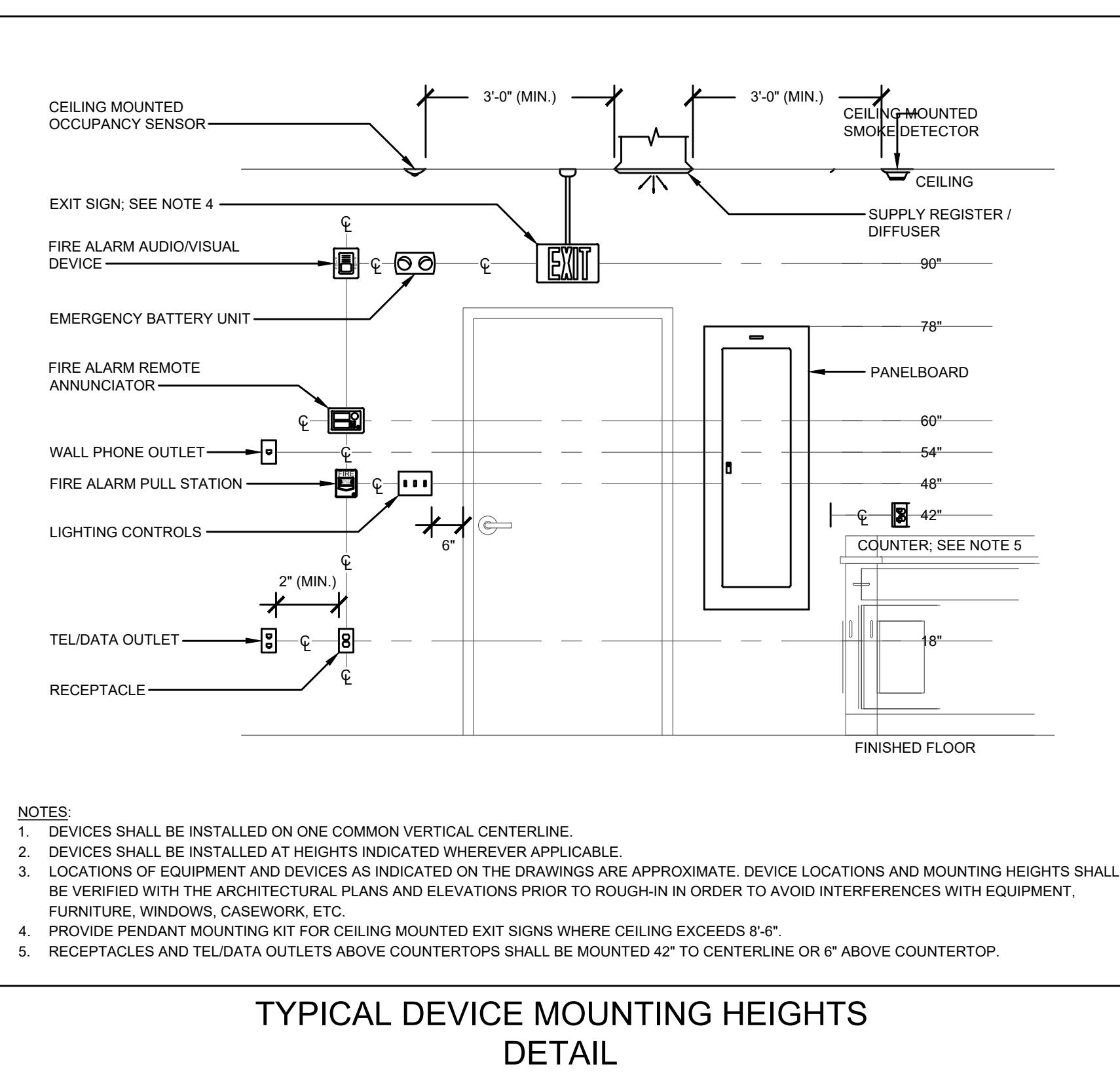
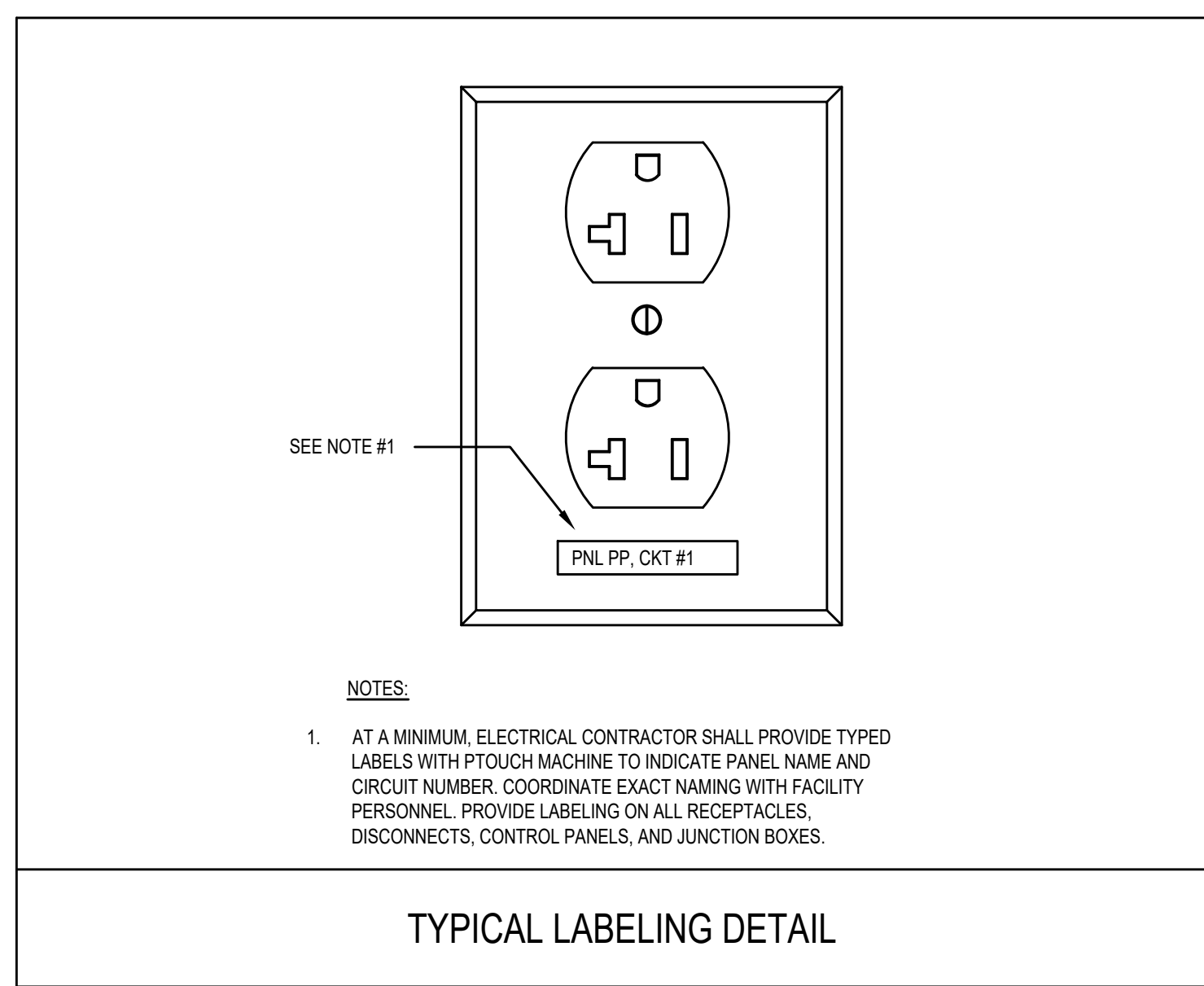
MECHANICAL/PLUMBING EQUIPMENT TAG

MECHANICAL/PLUMBING EQUIPMENT TAG. "RTU" DENOTES EQUIPMENT TYPE. "1" DENOTES EQUIPMENT NUMBER. REFER TO "SCHEDULE FOR MECHANICAL/PLUMBING EQUIPMENT" FOR ALL CIRCUIT INFORMATION, INCLUDING BUT NOT LIMITED TO BRANCH CIRCUIT WIRING, CONDUIT SIZE, VOLTAGE, PHASE, DISCONNECT SWITCH, AND CIRCUIT BREAKER. REFER TO MECHANICAL, PLUMBING, AND FIRE PROTECTION PLANS FOR EXACT EQUIPMENT LOCATIONS AND EQUIPMENT TYPE ABBREVIATIONS.

TECHNOLOGY AND AUDIO VISUAL SYSTEM

THE ELECTRICAL CONTRACTOR SHALL BE RESPONSIBLE FOR THE SUPPORTING INFRASTRUCTURE, BACKBOXES, CONDUITS, CABLE TRAYS, INDICATED NOTATION, AND 120V WIRING AS SHOWN ON THE TECHNOLOGY AND AUDIOVISUAL DRAWINGS. ALL TC AND AV SERIES DRAWINGS AND SPECIFICATIONS INCLUDING BUT NOT LIMITED TO THE FOLLOWING CONTRACT DRAWINGS SHALL BE REFERENCED FOR AUDIO VISUAL SCOPE TO BE COMPLETED BY THE ELECTRICAL CONTRACTOR:

| | | |
|-----------|-------------|--------------|
| 1. TCD.01 | 5. TC2.00 | 9. AV2.01.2 |
| 2. TC1.00 | 6. AV1.01 | 10. AV2.01.3 |
| 3. TC1.01 | 7. AV1.01 | 11. AV3.01 |
| 4. TC1.11 | 8. AV2.01.1 | |



LLB
ARCHITECTS

Lerner Ladds Bartels
Pawtucket, RI
401.421.7715
Worcester, MA
508.556.4648
www.LLBarch.com

B | E | R
BUILDING ENGINEERING RESOURCES, INC.
60 Main Street
N. Easton, MA 02556
T: 508.230.0240
F: 508.230.0242
ber@ber-engineering.com
www.ber-engineering.com

RENOVATIONS TO ALGER HALL
CYBER COMMAND CENTER

Project Location
RHODE ISLAND COLLEGE
600 MT PLEASANT AVENUE
PROVIDENCE, RI 02908

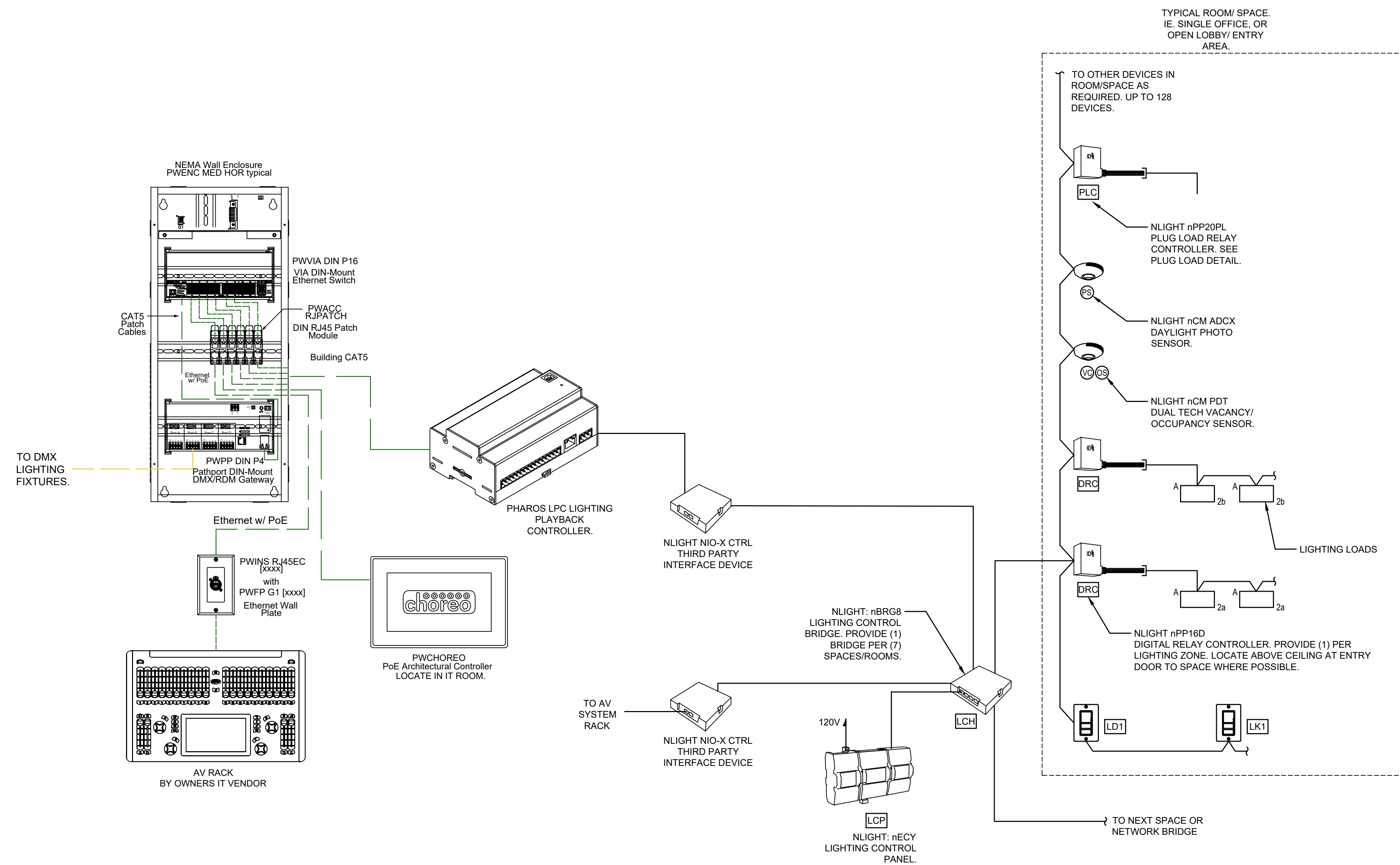
Project Information
CONSTRUCTION DOCUMENTS
30 AUGUST 2024

Revisions

| 1 | ADDENDUM 1 | 2024-11-13 |
|---|------------|------------|
| | | |
| | | |
| | | |
| | | |

Drawing Title
ELECTRICAL
LEGEND, NOTES, & FIXTURE
SCHEDULE

E0.01



LIGHTING CONTROL SYSTEM NOTES:

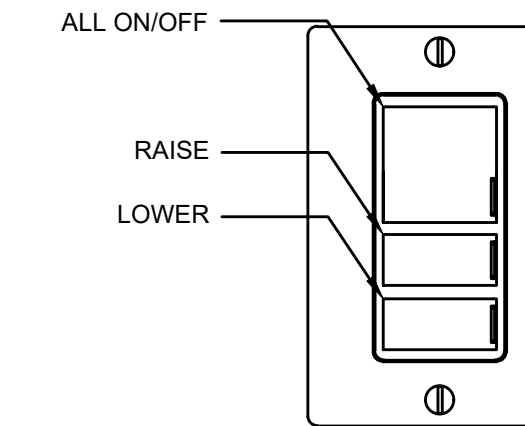
1. BASIS OF DESIGN IS THE NLIGHT WIRED CONTROL SYSTEM. LIGHTING CONTROL SYSTEM RISER DIAGRAM IS FOR INTENT ONLY. ALL COMPONENTS FOR A COMPLETE AND OPERATIONAL LIGHTING CONTROL SYSTEM SHALL BE PROVIDED.
2. PROVIDE MINIMUM OF 1 SYSTEM CONNECTED LOCAL DIMMING CONTROL STATION PER ROOM FOR MANUAL CONTROL OF LIGHTING IN ALL SPACES EXCEPT IN ELECTRICAL ROOM. ELECTRICAL ROOM SHALL HAVE LINE VOLTAGE ON/OFF CONTROL ONLY.
3. COLORS OF ALL DEVICES SHALL BE AS SELECTED BY ARCHITECT.
4. EXTERIOR BUILDING MOUNTED LIGHTING SHALL BE CONTROLLED VIA SCHEDULING TO BE COORDINATED WITH OWNER BASED ON ZONING SHOWN ON FLOOR PLANS. AT A MINIMUM NO MORE THAN ONE SIDE OF THE BUILDING SHALL BE ZONED TOGETHER.
5. ALL AREAS SEPARATED BY WALLS OR DOORS SHALL BE CONSIDERED AN INDEPENDENT SPACE AND PROVIDED WITH A SEPARATE CONNECTION TO THE LIGHTING CONTROL PANEL VIA A LIGHTING CONTROL BRIDGE.

1 LIGHTING CONTROL RISER DIAGRAM
SCALE: N.T.S.

| LIGHTING FIXTURE SCHEDULE | | | | | | | | | |
|---------------------------|--|--|----------|------|-------|---------|--|--|--|
| TYPE | DESCRIPTION | MANUFACTURE & PART NUMBER | LED | | | REMARKS | | | |
| | | | MOUNTING | VOLT | WATTS | | DIMENS | | |
| LS2 | 2' LINEAR SURFACE MOUNTED LUMINAIRE | LITHONIA #CLX-L24-2500-HEF-FDL-ND-ARVO-LT-GZ10-35K-80CRI-XX | SURFACE | UNV | 17.4 | 2500 | PROVIDE CHAIN HANG KIT AND ALL REQUIRED ACCESSORIES. | | |
| LS4 | 4' LINEAR SURFACE MOUNTED LUMINAIRE | LITHONIA #CLX-L48-4000-HEF-FDL-ND-ARVO-LT-GZ10-35K-80CRI-XX | SURFACE | UNV | 23.8 | 4190 | PROVIDE CHAIN HANG KIT AND ALL REQUIRED ACCESSORIES. | | |
| LT1 | CUSTOM CORNER T-BAR MOUNTED LUMINAIRE | JILC TECH #TBRGB-MW-CUSTOM-B-U-C | T-BAR | UNV | | | PROVIDE CUSTOM SIZE AND LAYOUT PER FLOOR PLANS. PROVIDE PIXEL BASED LED ENGINE BY MOSS LED #12VRGB800SS208-8 OR EQUAL. PROVIDE MADRIX NEBULA POWER SUPPLY OR EQUAL. PROVIDE DMX CONTROL. | | |
| LT2 | CUSTOM CORNER T-BAR MOUNTED LUMINAIRE | JILC TECH #TBRGB-MW-CUSTOM-B-U-C | T-BAR | UNV | | | PROVIDE CUSTOM SIZE AND LAYOUT PER FLOOR PLANS. PROVIDE PIXEL BASED LED ENGINE BY MOSS LED #12VRGB800SS208-8 OR EQUAL. PROVIDE MADRIX NEBULA POWER SUPPLY OR EQUAL. PROVIDE DMX CONTROL. | | |
| LR4E | 4' LINEAR RECESSED LUMINAIRE WITH EMERGENCY DRIVER | MERCURY #MLS4-XX-48-625-35K-HTA-1%DD-U-EM10 | RECESSED | UNV | 20.8 | 2500 | | | |
| LC1 | LED TAPE LIGHT MOUNTED IN FIXED CASEWORK | FIXTURE PROVIDED BY G.C. INCLUDED IN CASEWORK. FINAL CONNECTIONS AND CONTROLS BY E.C. | | | | | REFER TO ARCHITECTURAL DETAIL FOR INSTALLATION AND MOUNTING. PROVIDE MADRIX NEBULA POWER SUPPLY OR EQUAL. PROVIDE DMX CONTROL. | | |
| PC1 | 4" SQUARE PENDANT DOWNLIGHT | GOTHAM #IV04SQCYL-PC-D-20L-35K-80CRI-MD-MIN10-MVOLT-NLIGHT-LS-JB-X-CAN-XX-EP-XX-LSS-CPC | RECESSED | UNV | 22.4 | 1942 | | | |
| PC1E | 4" SQUARE PENDANT DOWNLIGHT WITH EMERGENCY DRIVER | GOTHAM #IV04SQCYL-PC-D-20L-35K-80CRI-MD-MIN10-MVOLT-NLIGHT-LS-JB-X-CAN-XX-ETWR-P-XX-LSS-CPC | RECESSED | UNV | 22.4 | 1942 | | | |
| | LED EXIT SIGN WITH BATTERY BACK-UP | EMERGLITE #W-PREM-DN-R | LED | UNV | 2.8 | 2.8 | PROVIDE CEILING MOUNT TO MATCH EXISTING. PROVIDE FACE QTY. AND ARROWS PER FLOOR PLANS. | | |
| J | LED VAPOR TIGHT JELLY JAR FIXTURE SUITABLE FOR EXTERIOR INSTALLATION | EELP #VP3-Q-S-10L-QT-40K | SURFACE | UNV | 12.7 | 803 | | | |

LIGHTING FIXTURE NOTES:

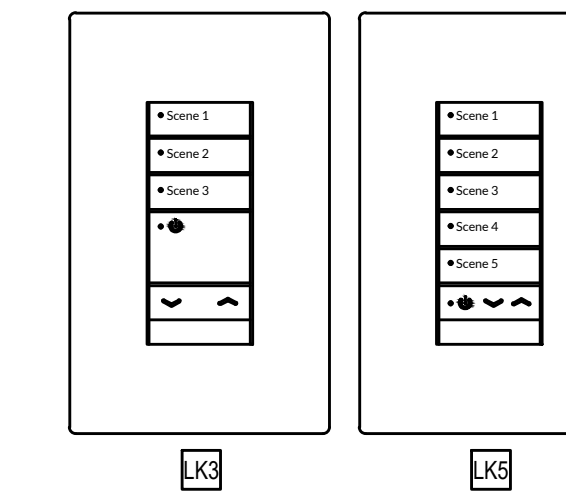
1. PROVIDE ACCESSORIES AND MOUNTING HARDWARE FOR ALL FIXTURES.
2. COLORS SHALL BE AS SELECTED BY ARCHITECT.
3. COORDINATE EXACT LOCATION WITH ARCHITECT PRIOR TO ROUGH-IN.
4. E.C. SHALL ENSURE THAT ALL PROPOSED SWITCHES AND DIMMER SWITCHES ARE COMPATIBLE WITH THE LIGHT FIXTURE(S) INDICATED TO BE CONTROLLED. INSTALL ALL SWITCHES AND DIMMER SWITCHES PER MANUFACTURER'S RECOMMENDATIONS AND REQUIREMENTS.



TYPICAL LOCAL DIMMING STATION DETAIL: D1

NOTES:

1. BASIS OF DESIGN: NLIGHT NPOD#A SERIES
2. COORDINATE ENGRAVING WITH SCENE SELECTION BY OWNER AND ARCHITECT PRIOR TO ORDERING. PROGRAM DEVICE ACCORDING TO SCENE SELECTION.
3. COORDINATE COLOR BY OWNER AND ARCHITECT PRIOR TO ORDERING.
4. WHERE THERE ARE MULTIPLE DEVICES, COMBINE UNDER SINGLE FACEPLATE.
5. NUMBER IN SYMBOL SHALL INDICATE NUMBER OF DIMMING STATIONS GANGED UNDER SINGLE COVER PLATE. I.E. LD3 SHALL INDICATE (3) CONTROL STATIONS WITH SINGLE COVER PLATE.



TYPICAL KEYPAD DETAIL: LK3, LK5

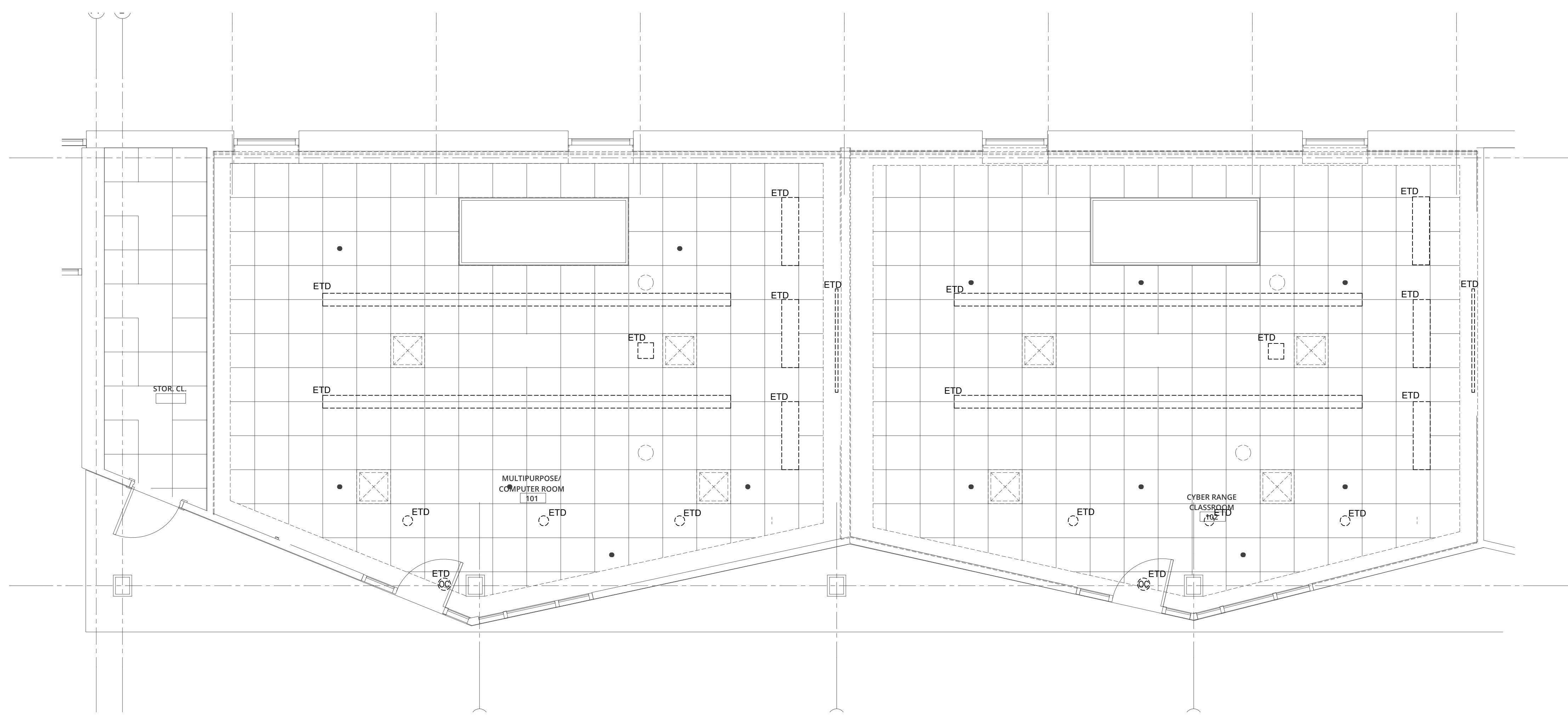
NOTES:

1. BASIS OF DESIGN: nPOD#MA SERIES
 - 1.a. LK3 - PROVIDE 3 BUTTON KEYPAD
 - 1.b. LK5 - PROVIDE 5 BUTTON KEYPAD
 - 1.c. (BUTTON QTY NOTED INDEPENDANT OF ON/OFF/DIM)
2. COORDINATE ENGRAVING WITH SCENE SELECTION BY OWNER AND ARCHITECT PRIOR TO ORDERING. PROGRAM DEVICE ACCORDING TO SCENE SELECTION.
3. COORDINATE COLOR BY OWNER AND ARCHITECT PRIOR TO ORDERING.
4. WHERE THERE ARE MULTIPLE DEVICES, COMBINE UNDER SINGLE FACEPLATE.

2 CONTROL STATION DETAILS
SCALE: N.T.S.

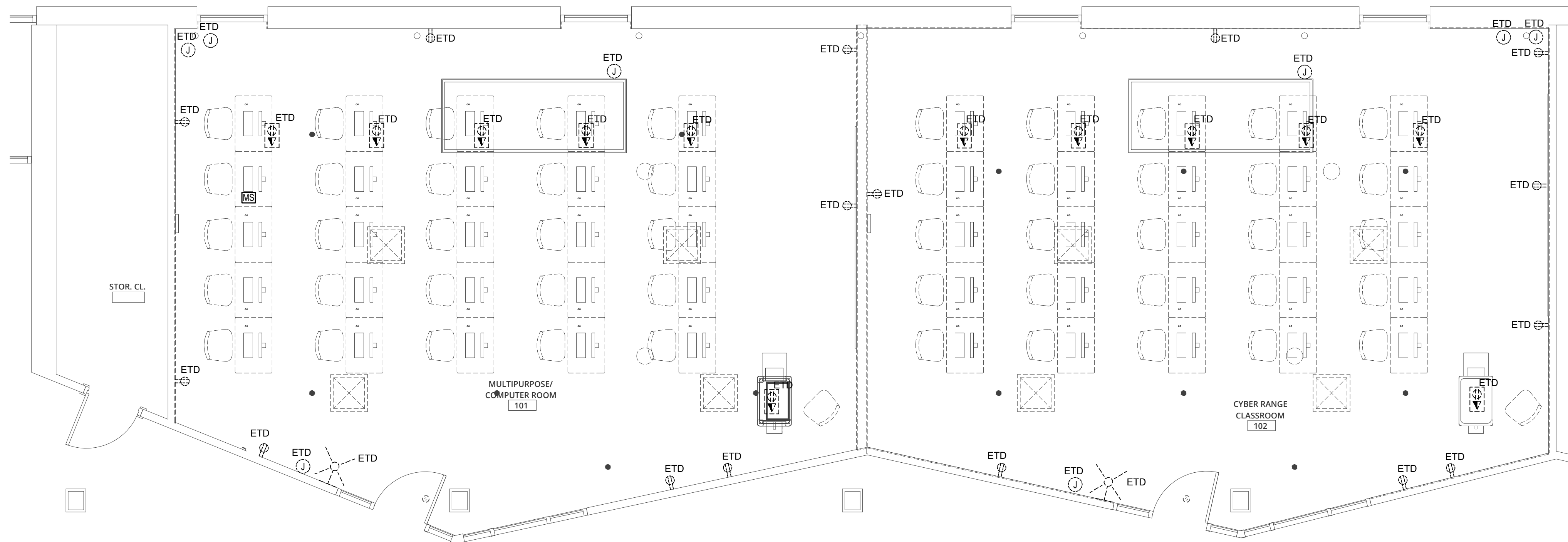
Revisions

| 1 | ADDENDUM 1 | 2024-11-13 |
|---|------------|------------|
| | | |
| | | |
| | | |
| | | |



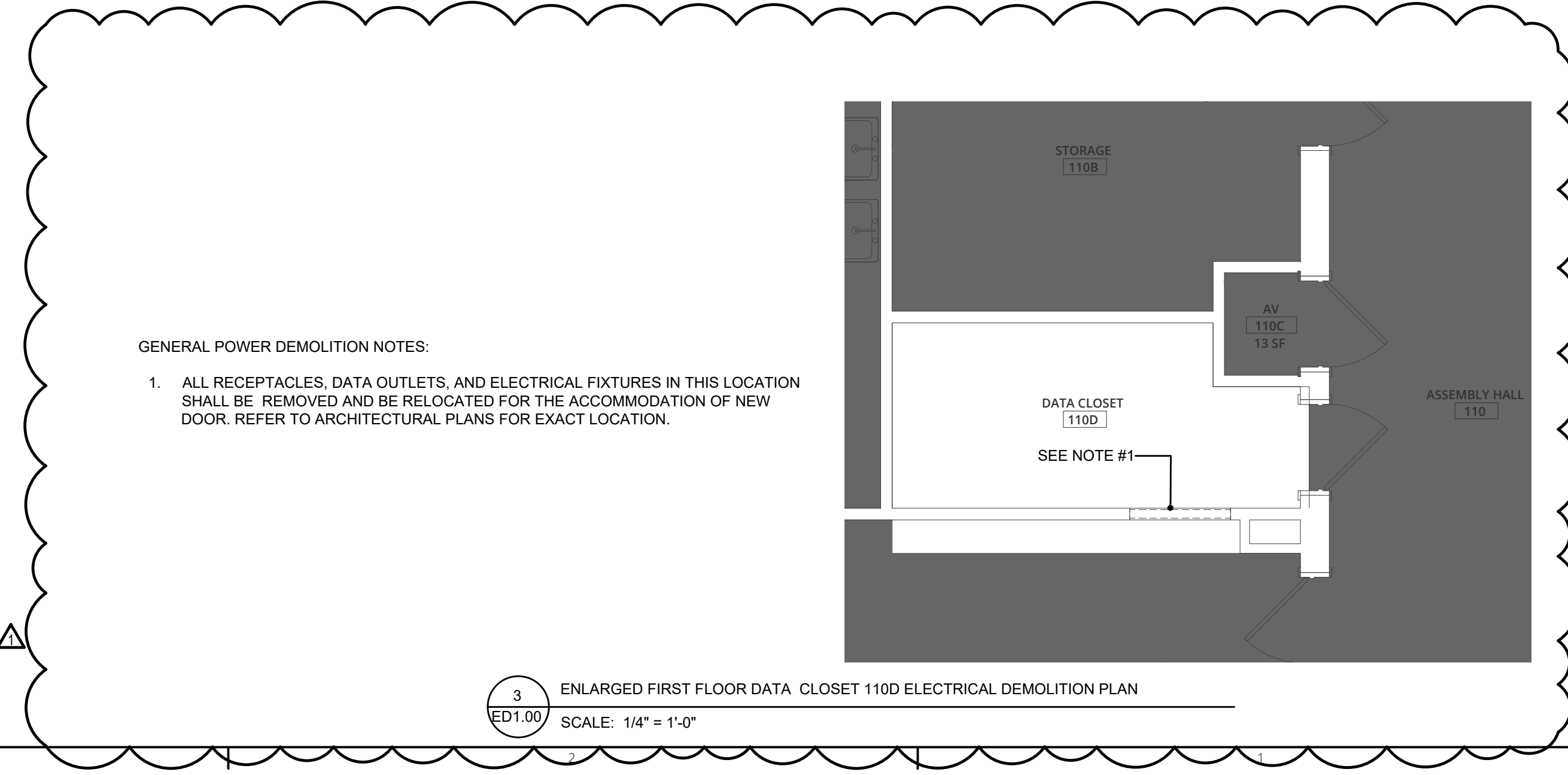
1 ENLARGED FIRST FLOOR LIGHTING DEMOLITION PLAN
SCALE: 1/4" = 1'-0"

GENERAL LIGHTING DEMOLITION NOTES:
1. ALL LIGHTING FIXTURES, CONTROL DEVICES, AND SWITCHING SHALL BE DEMOLISHED. ALL WIRING SHALL BE REMOVED BACK TO PANEL LOCATION.



2 ENLARGED FIRST FLOOR ELECTRICAL DEMOLITION PLAN
SCALE: 1/4" = 1'-0"

GENERAL POWER DEMOLITION NOTES:
1. ALL RECEPTACLES, DATA OUTLETS, AND ELECTRICAL FIXTURES SHALL BE DEMOLISHED. ALL FIRE ALARM DEVICES SHALL BE DEMOLISHED. ALL WIRING SHALL BE REMOVED BACK TO PANEL LOCATION.
2. ABOVE CEILING HVAC UNITS SHALL BE DISCONNECTED AND MADE SAFE FOR REMOVAL BY HVAC. ALL WIRING SHALL BE REMOVED BACK TO PANEL LOCATION.



GENERAL POWER DEMOLITION NOTES:
1. ALL RECEPTACLES, DATA OUTLETS, AND ELECTRICAL FIXTURES IN THIS LOCATION SHALL BE REMOVED AND BE RELOCATED FOR THE ACCOMMODATION OF NEW DOOR. REFER TO ARCHITECTURAL PLANS FOR EXACT LOCATION.

3 ENLARGED FIRST FLOOR DATA CLOSET 110D ELECTRICAL DEMOLITION PLAN
SCALE: 1/4" = 1'-0"

LLB
ARCHITECTS
Lerner Ladds Bartels
Pawtucket, RI
401.421.7715
Worcester, MA
508.556.4648
www.LLBarch.com

B|E|R
BUILDING ENGINEERING RESOURCES, INC.
66 Main Street, N. Easton, MA 02556
Office: 508.230.0240
Fax: 508.230.0265
351 Centerville Road, Warwick, RI 02886
Tel: 401.384.1862
www.be-engineering.com

RENOVATIONS TO ALGER HALL
CYBER COMMAND CENTER

Project Location
RHODE ISLAND COLLEGE
600 MT PLEASANT AVENUE
PROVIDENCE, RI 02908

Project Information
CONSTRUCTION DOCUMENTS
30 AUGUST 2024

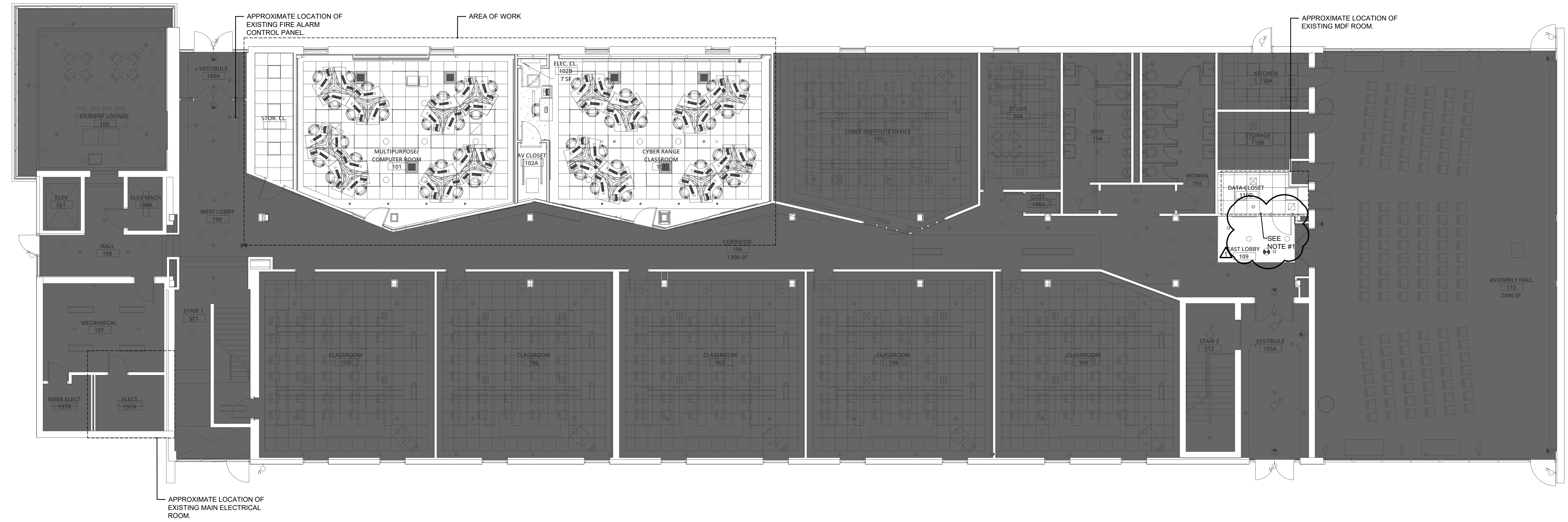
Revisions

| 1 | ADDENDUM 1 | 2024-11-13 |
|---|------------|------------|
| | | |
| | | |
| | | |
| | | |

Drawing Title
ELECTRICAL
ENLARGED FIRST FLOOR
DEMOLITION PLANS

ED1.00

GENERAL POWER NOTES:
 1. REFER TO ARCHITECTURAL PLANS FOR THE NEW LOCATIONS OF THE RELOCATED ELECTRICAL DEVICES.



1 FIRST FLOOR OVERALL PLAN
 SCALE: 1/8" = 1'-0"

RENOVATIONS TO ALGER HALL
CYBER COMMAND CENTER

Project Location
RHODE ISLAND COLLEGE
 600 MT PLEASANT AVENUE
 PROVIDENCE, RI 02908

Project Information
CONSTRUCTION DOCUMENTS
 30 AUGUST 2024

Revisions

| 1 | ADDENDUM 1 | 2024-11-13 |
|---|------------|------------|
| | | |
| | | |
| | | |
| | | |

Drawing Title
FIRST FLOOR OVERALL PLAN